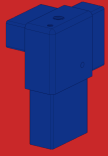
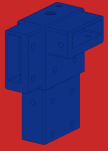


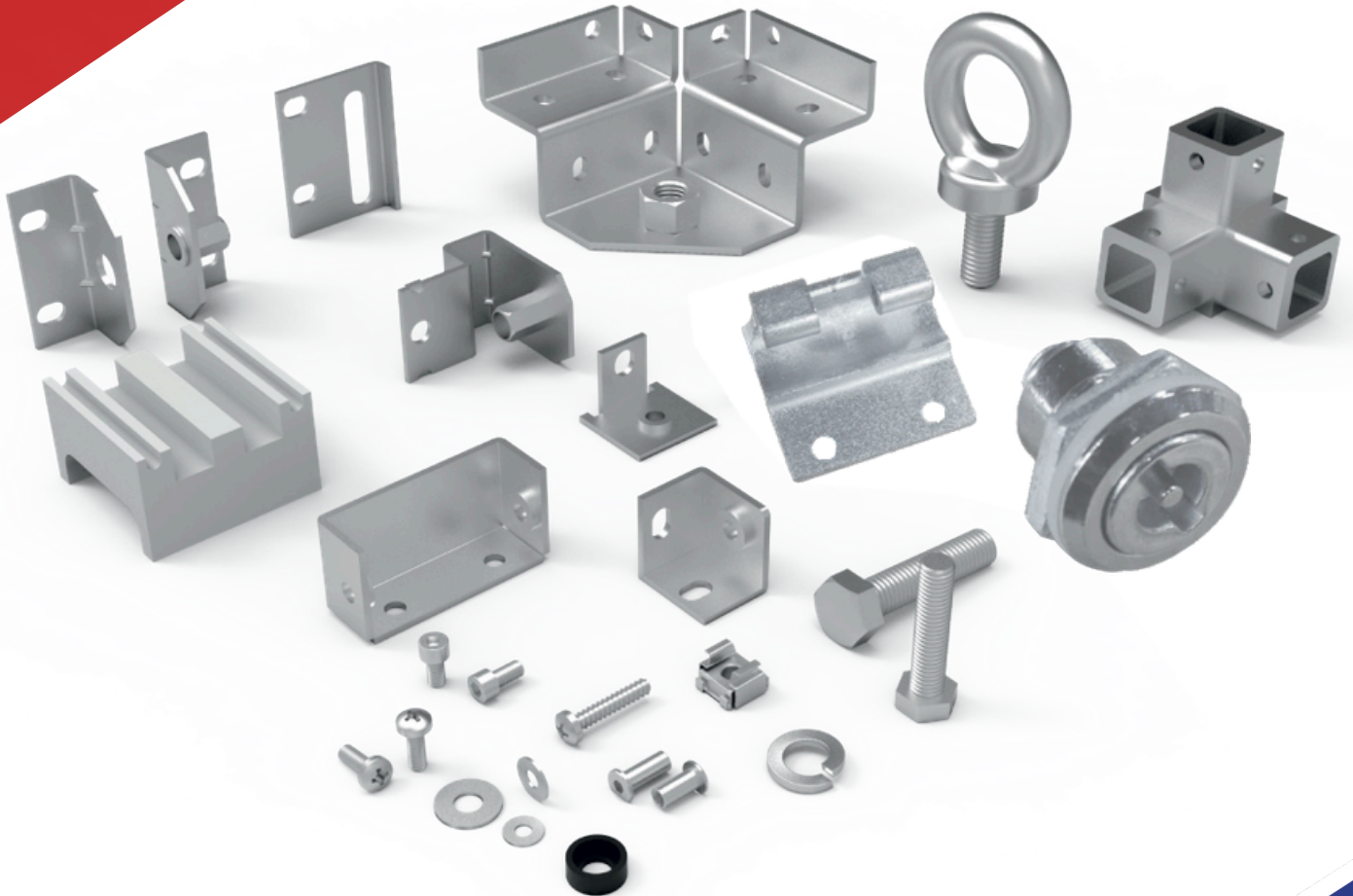
ADAPTABLE



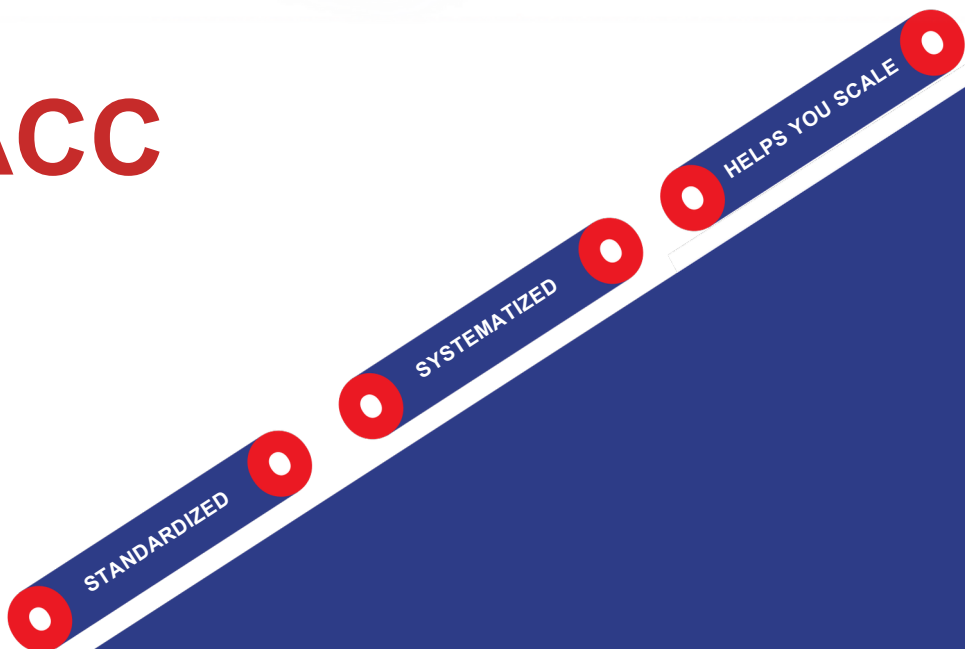
FLEXIBLE

VERSATILE

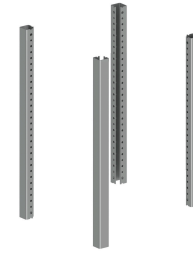
MODUTEC[®]
Simplifying Panel Building



MODACC



FRAME BAR

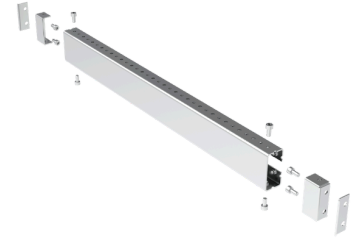


Category	Description	Order ID	MOQ	Unit
P01	Frame Bar 300 L	P0101XXX030ACXX	1	Set
P01	Frame Bar 450 L	P0101XXX045ACXX	1	Set
P01	Frame Bar 600 L	P0101XXX060ACXX	1	Set
P01	Frame Bar 750 L	P0101XXX075ACXX	1	Set
P01	Frame Bar 900 L	P0101XXX090ACXX	1	Set
P01	Frame Bar 1200 L	P0101XXX120ACXX	1	Set
P01	Frame Bar 1800 L	P0101XXX180ACXX	1	Set
P01	Frame Bar 2100 L	P0101XXX210ACXX	1	Set
P01	Frame Bar 2400 L	P0101XXX240ACXX	1	Set

Technical & Packaging Notes:

1. Nature of the component : Signature
2. Material : 2 mm thickness Aluzinc without powder coating as standard supply
3. Standard Package consists of 4 nos. of Frame Bar.

CROSS BAR



Category	Description	Order ID	MOQ	Unit
S01	Cross Bar Asm 300 L	S0102XXX030ACXX	1	No
S01	Cross Bar Asm 450 L	S0102XXX045ACXX	1	No
S01	Cross Bar Asm 600 L	S0102XXX060ACXX	1	No
S01	Cross Bar Asm 750 L	S0102XXX075ACXX	1	No
S01	Cross Bar Asm 900 L	S0102XXX090ACXX	1	No
S01	Cross Bar Asm 1050 L	S0102XXX105ACXX	1	No
S01	Cross Bar Asm 1200 L	S0102XXX120ACXX	1	No
S01	Cross Bar Asm 1350 L	S0102XXX135ACXX	1	No
S01	Cross Bar Asm 1500 L	S0102XXX150ACXX	1	No
S01	Cross Bar Asm 1650 L	S0102XXX165ACXX	1	No
S01	Cross Bar Asm 1800 L	S0102XXX180ACXX	1	No
S01	Cross Bar Asm 1950 L	S0102XXX195ACXX	1	No
S01	Cross Bar Asm 2100 L	S0102XXX210ACXX	1	No
S01	Cross Bar Asm 2250 L	S0102XXX225ACXX	1	No
S01	Cross Bar Asm 2400 L	S0102XXX240ACXX	1	No

Technical & Packaging Notes:





1. Nature of the component : Signature
2. Material : 2 mm thickness Aluzinc without powder coating as standard supply
3. Actual part dimension will be 60 mm lesser than the feeder dimension to accommodate Cross Bar.

SI No.	Part Number	Part Description	Part Image	MOQ	UOM	Area of Usage
1	MTPESSAA0001R00	Tripod - A		8	Nos	Structure
2	MTSESSBA0001R00	Lifting Clamp S - Asm		4	Nos	Structure
3	MTPESSAB0002R00	Corner Gusset - A		8	Nos	Structure
4	MTPESSAB0003R00	Corner Gusset - B		100	Nos	Door Stiffener
5	MTPESSAB0024R00	MLR Closing Plate		8	Nos	Plinth
6	MTSESSBA0022R00	MLR Corner Profile - Lh Asm		4	Nos	Plinth
7	MTSESSBA0023R00	MLR Corner Profile - Rh Asm		4	Nos	Plinth
8	MTPESSAB0026R00	ISMC 75 - Corner Plate		4	Nos	ISMC Base Assembly
9	MTPESSAB0027R00	ISMC 100 - Corner Plate		4	Nos	ISMC Base Assembly
10	MTPESSAB0004R00	Connector Channel - A		20	Nos	Cross bar Fixing
11	MTPESSAB0005R00	Connector Channel - B		20	Nos	Mounting Rail Fixing
12	MTSESSBA0018R00	Cover Fixing Bracket S - Asm		100	Nos	Bolted Cover Fixing
13	MTSESSBA0019R00	Cover Fixing Bracket - E120 S-Asm		50	Nos	120 mm Bolted Cover End Clamp
14	MTSESSBA0020R00	Cover Fixing Bracket - M120 S-Asm		25	Nos	120 mm Bolted Cover Middle Clamp
15	MTPESSAB0006R00	Single Hardware Clamp - A		100	Nos	Top Plate Assembly / Partition / Coupling Sheet
16	MTPESSAB0007R00	Single Hardware Clamp - B		100	Nos	Side Partitions
17	MTPESSAA0004R00	Centre Hinge		100	Nos	Hinged Door

SI No.	Part Number	Part Description	Part Image	MOQ	UOM	Area of Usage
18	MTPESSAA0005R00	Centre Hinge Pin		100	Nos	Hinged Door
19	MTPESSAA0006R00	Centre Hinge Bush		100	Nos	Hinged Door (For 1.6 mm)
20	MTPESSAA0010R00	Centre Hinge Bush - Chamfered		100	Nos	Hinged Door (For 2 mm)
21	MTPESSAB0020R00	Circlip		100	Nos	Hinged Door
22	MTSESSBA0014R00	Cam Asm - Pin Type - PY		100	Nos	Hinged Door
23	MTSESSBA0051R00	Cam Asm - Pin Type - EK		100	Nos	Hinged Door
24	MTSESSBA0052R00	Cam Asm - Pin Type - NR		100	Nos	Hinged Door
25	MTPESSAB0014R00	Lock Lip - 01		100	Nos	Hinged Door (for Cam Asm - Pin Type - PY)
26	MTPESSAB0084R00	Lock Lip - 07		100	Nos	Hinged Door(for Cam Asm - Pin Type - EK & NR)
27	MTPESSAB0015R00	Lock Latch - Lh		100	Nos	Hinged Door
28	MTPESSAB0016R00	Lock Latch - Rh		100	Nos	Hinged Door
29	MTPESSAC0001R00	Universal Spacer		20	Nos	Cross bar Fixing
30	MTPESSAB0011R00	Coupling Bracket - A		4	Nos	Panel Coupling
31	MTSESSBA0013R00	Coupling Bracket - B S - Asm		4	Nos	Panel Coupling
32	MTPESSAB0013R00	EB Clamp		100	Nos	Earth Busbar Clamp support
33	MTPESSAD0012R00	M4 x 8 Taptite Philips Pan Head Star Screw		1000	Nos	Side Partition with Feeder Partition

SI No.	Part Number	Part Description	Part Image	MOQ	UOM	Area of Usage
34	MTPESSAD0005R00	M4 x 12 Copper Plated CD Weld Stud		1000	Nos	Hinged Door (Drawing Pocket)
35	MTPESSAD0048R00	M6 x 10 Hex Bolt		1000	Nos	DMC Conical
36	MTPESSAD0030R00	M6 x 12 Allen Head Trilobular Screw		1000	Nos	Frame Assembly
37	MTPESSAD0031R00	M6 x 15 Allen Head Trilobular Screw		1000	Nos	Frame Assembly
38	MTPESSAD0032R00	M6 x 12 Allen Head Trilobular Screw - With Flange		1000	Nos	Frame Assembly
39	MTPESSAD0033R00	M6 x 15 Allen Head Trilobular Screw - With Flange		1000	Nos	Frame Assembly
40	MTPESSAD0035R00	M6 x 30 Allen Head Trilobular Screw		1000	Nos	SMC BB support
41	MTPESSAD0043R00	M6 x 12 Copper Plated CD Weld Stud		1000	Nos	Hinged Doors/Bolted Cover
42	MTPESSAD0039R00	M6 x 20 Pan Head Combi Truss Screw		1000	Nos	Bolted Cover Fixing
43	MTPESSAD0041R00	M6 x 30 Pan Head Combi Truss Screw		1000	Nos	Bolted Cover Fixing
44	MTPESSAD0055R00	M6 x 13 Splint Nut		1000	Nos	Door Stiffener
45	MTPESSAD0069R00	M8 x 10 Hex Bolt		100	Nos	DMC Conical
46	MTPESSAD0077R00	M8 x 15 Csk Allen Socket Screw		100	Nos	Plinth
47	MTPESSAD0070R00	M8 x 25 Hex Bolt		1000	Nos	Panel Coupling
48	MTPESSAD0085R00	M10 Threaded Rod SS - 1 m		10	Nos	Busbar Support Channel
49	MTPESSAD0082R00	M10 x 15 Hex Bolt		100	Nos	DMC Conical
50	MTPESSAD0094R00	M10 x 30 Hex Bolt 8.8 Grade		1000	Nos	Assembling the Structure with the Base

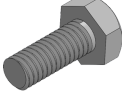

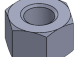



SI No.	Part Number	Part Description	Part Image	MOQ	UOM	Area of Usage
51	MTPESSAD0102R00	M12 x 15 Hex Bolt		1000	Nos	DMC Conical
52	MTPESSAD0097R00	M12 Eyebolt - 25 mm		50	Nos	Lifting Clamp
53	MTPESSAD0098R00	M12 Eyebolt - 50 mm		50	Nos	Lifting Clamp
54	MTPESSAD0009R00	M4 Flat Washer		1000	Nos	Drawing Pocket
55	MTPESSAD0051R00	M6 Flat Washer		1000	Nos	Frame Assembly
56	MTPESSAD0054R00	M6 Split Washer		1000	Nos	DMC Conical
57	MTPESSAC0016R00	M6 - IP Washer_W		1000	Nos	Bolted Cover Fixing
58	MTPESSAD0073R00	M8 Flat Washer		1000	Nos	Panel Coupling
59	MTPESSAD0074R00	M8 Split Washer		1000	Nos	Panel Coupling
60	MTPESSAD0087R00	M10 Flat Washer		1000	Nos	Base & Structure Assembly / Busbar Supports
61	MTPESSAD0088R00	M10 Split Washer		1000	Nos	Base & Structure Assembly / Busbar Supports
62	MTPESSAD0010R00	M4 Nut		1000	Nos	Drawing Pocket
63	MTPESSAD0057R00	M6 Cage Nut		1000	Nos	Form 4 Box
64	MTPESSAD0059R00	M6 Weld Nut		1000	Nos	Plinth
65	MTPESSAD0089R00	M10 Nut Type - 1		1000	Nos	Busbar Support
66	MTPESSAD0091R00	M10 Weld Nut		1000	Nos	ISMC Corner Plate
67	MTPESSAE0003R00	PU Foam Gasket 10 x 5 mm		100	m	Doors & Covers
68	MTSESSBA0054R00	PU Foam Gasket 10 x 5 mm - SA		100	m	Doors & Covers


SI No.	Part Number	Part Description	Part Image	MOQ	UOM	Area of Usage
69	MTPESSAE0007R00	PE Gasket Black 12 x 3 mm - 10 m		100	m	Gland Plate
70	MTPESSAE0006R00	XLPE Gasket White 25 x 3 mm - 10 m		100	m	Panel Coupling
71	MTPESSAE0002R00	EPDM Gasket 10 x 5 mm		10	m	Doors & Covers
72	MTPESSAE0010R00	Dia 50 mm Grommet		100	Nos	Plinth
73	MTPESSAC0039R00	G047 Insulator - 11 mm_W		100	Nos	Busbar Supports
74	MTPESSAC0004R00	SMC - 360 mm		2	Nos	Busbar Supports
75	MTPESSAC0005R00	SMC - 540 mm		2	Nos	Busbar Supports
76	MTPESSAC0017R00	Drawing Pocket - 285 x 240		10	Nos	Hinged Door
77	MTPESSAC0018R00	Drawing Pocket - 190 x 185		10	Nos	Hinged Door
78	MTPESSAA0015R00	Dia 45 mm MS Pipe THK 6 mm		2	m	For Panel Lifting
79	MTPESSAA0007R00	Key - Pin Type		10	Nos	Hinged Door
80	MTPESSAF0017R00	Adhesive Fast Bond Grade 1800		10	Nos	EPDM Gasket Fixing

SI No.	Part Number	Part Description	Part Image	MOQ	UOM	Area of Usage
1	MTPESSAA0004R00	Centre Hinge		100	Nos	Hinged Door
2	MTPESSAA0005R00	Centre Hinge Pin		100	Nos	Hinged Door
3	MTPESSAA0006R00	Centre Hinge Bush		100	Nos	Hinged Door (For 1.6 mm)
4	MTPESSAA0010R00	Centre Hinge Bush - Chamfered		100	Nos	Hinged Door (2 mm only)
5	MTPESSAA0008R00	Cross-bar Tripod - Lh		8	Nos	Structure
6	MTPESSAA0009R00	Cross-bar Tripod - Rh		8	Nos	Structure
7	MTPESSAB0002R00	Corner Gusset - A		8	Nos	Structure
8	MTPESSAB0003R00	Corner Gusset - B		100	Nos	Door Stiffener
9	MTPESSAB0006R00	Single Hardware Clamp - A		100	Nos	Top Plate Assembly / Partition / Coupling Sheet
10	MTPESSAB0020R00	Circlip		100	Nos	Hinged Door
11	MTPESSAB0024R00	MLR Closing Plate		8	Nos	Plinth
12	MTPESSAB0030R00	Corner Gusset - C Lh		100	Nos	Structure
13	MTPESSAB0031R00	Corner Gusset - C Rh		100	Nos	Structure
14	MTPESSAB0032R00	Corner Gusset - D Lh		100	Nos	Structure
15	MTPESSAB0033R00	Corner Gusset - D Rh		100	Nos	Structure
16	MTPESSAB0034R00	Cover Support Clamp		100	Nos	Structure
17	MTPESSAB0035R00	Mounting Clamp - A Lh		50	Nos	Mounting Plate

SI No.	Part Number	Part Description	Part Image	MOQ	UOM	Area of Usage
18	MTPESSAB0036R00	Mounting Clamp - A Rh		50	Nos	Mounting Plate
19	MTPESSAB0042R00	Door Stay - Part A		10	Nos	Hinged Door
20	MTPESSAB0043R00	Door Stay - Part B		10	Nos	Hinged Door
21	MTPESSAB0044R00	Door Stay - Part C		10	Nos	Hinged Door
22	MTPESSAB0082R00	Lock Lip - 05		1	Nos	Hinged Door
23	MTPESSAB0083R00	Lock Lip - 06		1	Nos	Hinged Door
24	MTSESSBA0018R00	Cover Fixing Bracket S - Asm		100	Nos	Bolted Cover Fixing Bracket
25	MTSESSBA0038R00	Cross-Bar Lifting Clamp Lh S - Asm		4	Nos.	Structure
26	MTSESSBA0039R00	Cross-Bar Lifting Clamp Rh S - Asm		4	Nos	Structure
27	MTSESSBA0040R00	Door lifting Guide S -Asm		100	Nos	Hinged Door
28	MTSESSBA0041R00	Wheel S-Asm		100	Nos	Hinged Door
29	MTSESSBA0043R00	Cover Fixing bracket - A - Asm		100	Nos	Bolted Cover Fixing Bracket
30	MTAESSBB00017R00	3 Point Lock Asm - DR1		1	Set	Single Door - 33°
31	MTAESSBB00018R00	3 Point Lock Asm - DR2		1	Set	Double Door - 56° (Under R&D Development)
32	MTSESSBA0022R00	MLR Corner Profile - Lh Asm		4	Set	Plinth
33	MTSESSBA0023R00	MLR Corner Profile - Rh Asm		4	Set	Plinth

SI No.	Part Number	Part Description	Part Image	MOQ	UOM	Area of Usage
34	MTPRESSAC0017R00	Drawing Pocket - 285 x 240		10	Nos	Hinged Door
35	MTPRESSAC0018R00	Drawing Pocket - 190 x 185		10	Nos	Hinged Door
36	MTPRESSAC0022R00	Mounting Plate Guide		25	Nos	Mounting Plate
37	MTPRESSAD0001R00	M4 x 8 Phillips Pan Head Screw		1000	Nos	Door lifting Guide Assembly
38	MTPRESSAD0005R00	M4 x 12 Copper Plated CD Weld Stud		1000	Nos	Hinged Door (Drawing Pocket)
39	MTPRESSAD0030R00	M6 x 12 Allen Head Trilobular Screw		1000	Nos	Frame Assembly
40	MTPRESSAD0031R00	M6 x 15 Allen Head Trilobular Screw		1000	Nos	Frame Assembly
41	MTPRESSAD0032R00	M6 x 12 Allen Head Trilobular Screw - With Flange		1000	Nos	Frame Assembly
42	MTPRESSAD0033R00	M6 x 15 Allen Head Trilobular Screw - With Flange		1000	Nos	Frame Assembly
43	MTPRESSAD0039R00	M6 x 20 Pan Head Combi Truss Screw		1000	Nos	Bolted Cover
44	MTPRESSAD0041R00	M6 x 30 Pan Head Combi Truss Screw		1000	Nos	Bolted Cover
45	MTPRESSAD0043R00	M6 x 12 Copper Plated CD Weld Stud		1000	Nos	Hinged Door
46	MTPRESSAD0045R00	M6 x 20 Copper Plated CD Weld Stud		1000	Nos	Hinged Door (for assembling 3 point lock rod)
47	MTPRESSAD0055R00	M6 x 13 Splint Nut		1000	Nos	Door Stiffener
48	MTPRESSAD0063R00	M6 x 12 Hex Bolt		1000	Nos	Door Stay
49	MTPRESSAD0064R00	M6 x 20 CSK Star Head Screw		100	Nos	Bolted Door (Embossed Type)
50	MTPRESSAD0065R00	M6 Hex Type Bush		100	Nos	Door Stay

SI No.	Part Number	Part Description	Part Image	MOQ	UOM	Area of Usage
51	MTPESSAD0066R00	M6 x 20 Hex Bolt		100	Nos	Hinged Door(fixing 3 point Lock rod)
52	MTPESSAD0077R00	M8 x 15 Csk Allen Socket Screw		100	Nos	Plinth
53	MTPESSAD0093R00	M10 x 30 Allen Head Screw		100	Nos	Base & Structure Assembly
54	MTPESSAD0097R00	M12 Eyebolt - 25 mm		50	Nos	Lifting Clamp
55	MTPESSAD0098R00	M12 Eyebolt - 50 mm		50	Nos	Lifting Clamp
56	MTPESSAD0010R00	M4 Nut		1000	Nos	Hinged Door
57	MTPESSAD0058R00	M6 Nut		1000	Nos	Door Stay
58	MTPESSAD0009R00	M4 Flat Washer		1000	Nos	Hinged Door
59	MTPESSAD0051R00	M6 Flat Washer		1000	Nos	Frame Assembly
60	MTPESSAD0073R00	M8 Flat Washer		1000	Nos	Door Stay
61	MTPESSAD0087R00	M10 Flat Washer		1000	Nos	Base & Structure Assembly
62	MTPESSAD0054R00	M6 Split Washer		1000	Nos	Base & Structure Assembly
63	MTPESSAD0088R00	M10 Split Washer		1000	Nos	Base & Structure Assembly
64	MTPESSAA0015R00	Dia 45 mm MS Pipe THK 6 mm		2	m	Panel Lifting Purpose
65	MTPESSAE0010R00	Dia 50 mm Grommet		100	Nos	Plinth

SI No.	Part Number	Part Description	Part Image	MOQ	UOM	Area of Usage
66	MTPESSAE0013R00	XLPE Gasket White 55 x 3 mm - 10 m		100	m	Panel Coupling
67	MTPESSAE0007R00	PE Gasket Black 12 x 3 mm - 10 m		100	m	Gland Plate
68	MTPESSAE0003R00	PU Foam Gasket 10 x 5 mm		100	m	Doors & Covers
69	MTSESSBA0054R00	PU Foam Gasket 10 x 5 mm - SA		100	m	Doors & Covers
72	MTPESSAE0002R00	EPDM Gasket 10 x 5 mm		10	m	Doors & Covers
73	MTPESSAF0017R00	Adhesive Fast Bond Grade 1800		10	Nos	EPDM Gasket Fixing

SI No.	Part Number	Part Description	Part Image	MOQ	UOM	Area of Usage
1	MTPESSAA0004R00	Centre Hinge		100	Nos	Hinged Door
2	MTPESSAA0006R00	Centre Hinge Bush		100	Nos	Hinged Door
3	MTPESSAA0005R00	Centre Hinge Pin		100	Nos	Hinged Door
4	MTPESSAB0020R00	Circlip		100	Nos	Hinged Door
5	MTPESSAB0015R00	Lock Latch - Lh		100	Nos	Hinged Door
6	MTPESSAB0016R00	Lock Latch - Rh		100	Nos	Hinged Door
7	MTPESSAB0002R00	Corner Gusset - A		8	Nos	Structure
8	MTPESSAB0006R00	Single Hardware Clamp - A		100	Nos	Structure
9	MTSESSBA0014R00	Cam Asm - Pin Type - PY		100	Nos	Hinged Door
10	MTPESSAB0014R00	Lock Lip - 01		100	Nos	Hinged Door
11	MTPESSAD0030R00	M6 x 12 Allen Head Trilobular Screw		1000	Nos	Structure Assembly
12	MTPESSAD0051R00	M6 Flat Washer		1000	Nos	Structure Assembly
13	MTPESSAE0003R00	PU Foam Gasket 10 x 5 mm		100	m	Hinged Door
14	MTSESSBA0054R00	PU Foam Gasket 10 x 5 mm - SA		100	m	Hinged Door
15	MTPESSAE0006R00	XLPE Gasket White 25 x 3 mm - 10 m		100	m	Cover Assembling
16	MTPESSAE0007R00	PE Gasket Black 12 x 3 mm - 10 m		100	m	Gland plate
17	MTPESSAB0018R00	B - Wall Mounts - 01		100	Nos	Structure

OUR GLOBAL SPREAD



AUSTRALIA

NEW ZEALAND

SOUTH EAST ASIA

MIDDLE EAST & AFRICA

INDIA

EUROPE

Modutec Ready Panels Pvt Ltd

No. 4, Survey No 105 , K.Ashwath Industrial Layout, Uttari Road
Kaggalipura, Off Kanakpura Road, Bangalore - 560116, India

+91 99014 59624, +91 98450 40837

sales@modutec.net, modular@modutec.net

www.modutec.net



Established 1988
Uniting Panel Builders

Proud Member of

Control Panel and Switchgear Manufacturers' Association

